

THE  
**MIDNIGHT  
QUILT  
SHOW**



**Criss Cross Quilt Episode**

# Criss Cross Quilt

Finished Size: Crib/Lap, Twin

Kit available exclusively at [Craftsy.com](https://www.craftsy.com)  
Pattern by Monique Jacobs



## THE MIDNIGHT QUILT SHOW

## Featured in This Episode



The Criss Cross Quilt Kit includes everything you need for your quilt top and binding, plus the pattern. Find it on [Craftsy.com](https://www.craftsy.com).

## Subscribe

Be sure to never miss an episode! Go to [youtube.com/midnightquiltshow](https://youtube.com/midnightquiltshow) and click "Subscribe" to get fresh episodes delivered to your inbox.

## #midnightquiltshow #mybluprint

Join our Instagram community! Follow @therealbluprint for daily inspiration, then share your own projects to inspire your fellow makers. Use the hashtag #mybluprint so we can see what you've made (and re-share it, too)!



## QUESTIONS OR COMMENTS?



Get in touch with our Customer Support team at [help@mybluprint.com](mailto:help@mybluprint.com)

**HAPPY MAKING!**

## Tips For Success

- 1. WATCH THE EPISODE!**  
See how Angela pieces and quilts these designs as she works her way through the quilt. Go to [youtube.com/bluprint](https://youtube.com/bluprint) and search for Criss Cross Quilt.
- 2. GET YOUR MACHINE READY**  
Prepare for quilting success by reading through entire pattern before starting. Make sure you have a sharp rotary blade and needle. Are you experiencing breakage of your top thread, or skipped stitches? Do you hear a quiet popping sound when your needles move through the fabric? These are all signs that your needle is dull and it's time for a change.
- 3. BE SURE TO VISIT ANGELA'S FAVORITE SUPPLIES PAGE:**  
[craftsy.com/quilting/ideas/angela-favorite-things](https://craftsy.com/quilting/ideas/angela-favorite-things)

**bluprint**<sup>TM</sup>  
WATCH + LEARN

# MATERIALS

Size	Dimensions	Block Layout	INCLUDED	REQUIRED	
			Quilt Top & Binding		Backing
Lap	48" x 58"	6 Columns	40 - 2 ½" wide strips, plus 2 - 2 ½" strips from binding fabric OR 42- 2 ½" x WOF strips 1 yard for blocks and binding		3 yards
Twin	64" x 83"	8 Columns	80 - 2 ½" wide strips, plus 1 - 2 ½" strip from binding fabric OR 81- 2 ½" x WOF strips 1 yard for blocks and binding		5 yards

## How to use Expand-A-Quilt

Ready to get started on your new Expand-A-Quilt? Step one is to find the chart for the quilt size that you'll be stitching! We encourage you to keep this pattern and use it again, with your own fabrics. Simply refer to the components chart for the required yardage on your preferred size!

## Recommended Tools & Notions

- Rotary cutter
- Quilting rulers
- Cutting mat
- 50wt cotton thread
- Spray starch

## General Guidelines

Please read the entire pattern once through before starting. Use a ¼" seam allowance unless otherwise directed.

## Abbreviations

- WOF = Width Of Fabric (approximately 42")

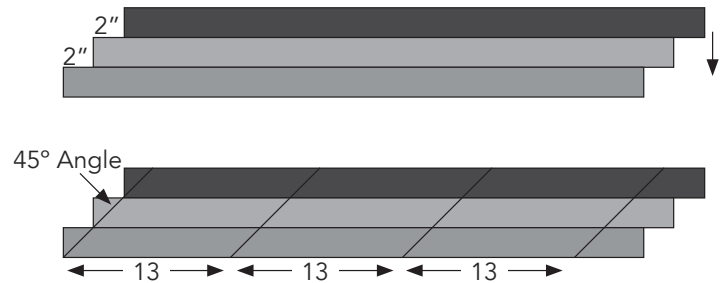
# PATTERN INSTRUCTIONS

## Lap (48" x 58") Cutting Instructions

From the binding fabric, cut:  
 2 - 2 ½" x WOF strips for quilt  
 7 - 2 ½" x WOF strips for binding

## Twin (64" x 83") Cutting Instructions

From the binding fabric, cut:  
 1 - 2 ½" x WOF strips for quilt  
 8 - 2 ½" x WOF strips for binding



*Lap Quilt:*

*Repeat to make 6 strip sets and cut into 18 total A units.*

*Twin Quilt:*

*Repeat to make 12 strip sets and cut into 36 total A units.*

## Piecing The Columns

*Crib/Lap Quilt:*

*To make the strip sets, use the 40 - 2 ½" wide strips and 2 - 2 ½" strips cut from the binding fabric.*

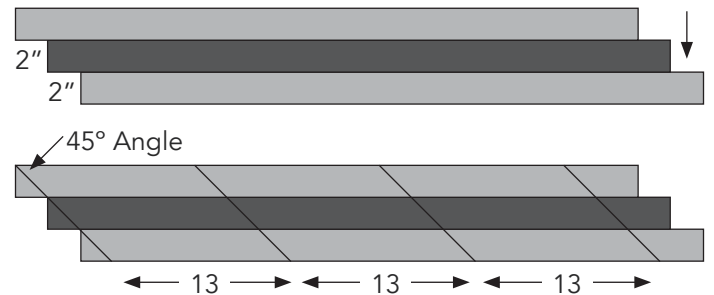
*Twin Quilt:*

*To make the strip sets, use the 80 - 2 ½" wide strips and 1 - 2 ½" strip cut from the binding fabric.*

### STEP 1

Before cutting, spray strips with spray starch to keep the bias edges from distorting. Using the 45° angle on your ruler, line up the edge and cut the corner off, as shown. Sew three strips together along the length to make a strip set. Stagger the strips so that they start 2" apart, as shown. Press in one direction. Measure over 13", mark and cut at the same 45° angle to make an A unit. Cut three A units per strip set.

*See diagram at the top of the next column.*



*Crib/Lap Quilt:*

*Repeat to make 6 strip sets and cut into 18 B units.*

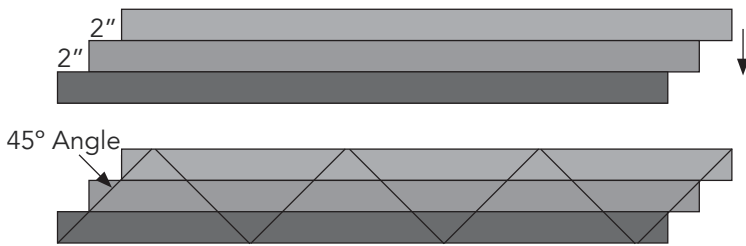
*Twin Quilt:*

*Repeat to make 12 strip sets and cut into 36 B units.*

# PATTERN INSTRUCTIONS

## STEP 3

Before cutting, spray strips with spray starch to keep the bias edges from distorting. Sew three strips together along the length to make a strip set. Stagger the strips so that they start 2", as shown. Press in one direction. Using the 45° angle on your ruler, line up the edge and cut the corner off, as shown. Rotate the ruler and cut at a 45° angle as shown to make a C unit. Cut six C units per strip set.



*Crib/Lap Quilt:*

*Repeat to make two strip sets and cut into a total of 12 C units.*

*Twin Quilt:*

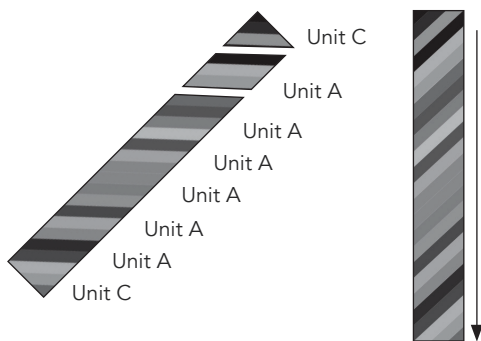
*Repeat to make three strip sets and cut into 18 C units.*

## STEP 4

**CRIB/LAP QUILT:** Sew a Column 1 together using six A units and two C units. Press seams in one direction. Spray with spray starch as needed. Repeat to make three Column 1's. Trim the sides of the column even to 8 1/2" wide.

Note that the C units will be smaller than the A units when you piece the columns together so this is why you need to trim up the columns to 8 1/2" wide.

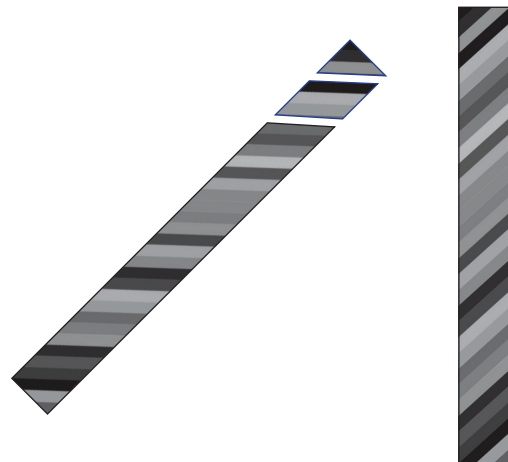
*Column 1.*



*Crib/Lap Quilt: Make 3 Column 1's.*

**TWIN QUILT:** Sew a Column 1 together using nine A units and two C units. Press seams in one direction. Spray starch as needed. Repeat to make four Column 1's. Trim the sides of the column even to 8 1/2" wide.

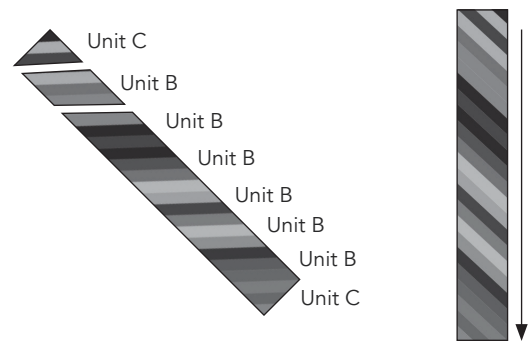
*Column 1.*



*Twin Quilt: Make 4 Column 1's.*

## STEP 5

**CRIB/LAP QUILT:** Sew a Column 2 together using six B units and two C units. Press seams in one direction. Spray with spray starch as needed. Repeat to make three Column 2's. Trim the sides of the column even to 8 1/2" wide.



*Column 2.*

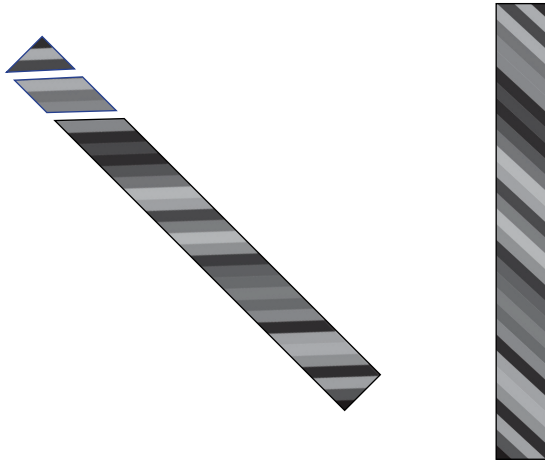
*Crib/Lap Quilt: Make 3 Column 2's.*

**Note:** that the C units will be smaller than the A units when you piece the columns together so this is why you need to trim up the columns to 8 1/2" wide.

# PATTERN INSTRUCTIONS

**TWIN QUILT:** Sew a Column 2 together using nine B units and two C units. Press seams in one direction. Spray starch as needed. Repeat to make four Column 2's. Trim the sides of the column even to 8 ½" wide.

*Column 2.*

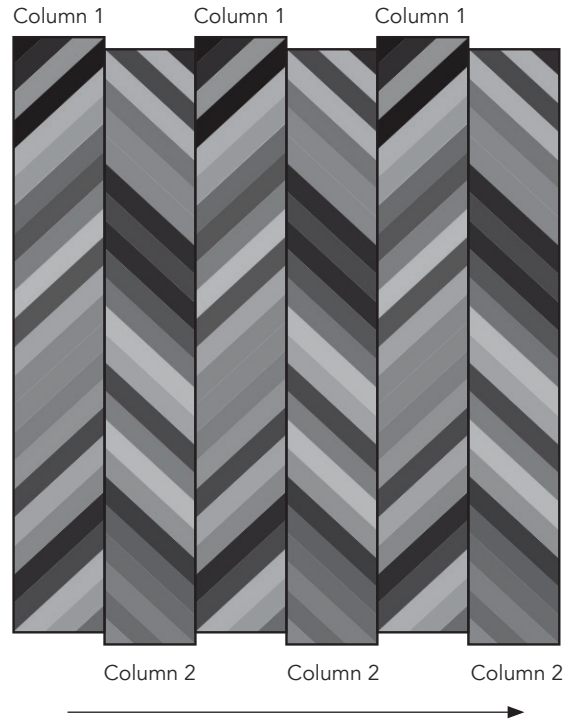


*Twin Quilt Make 4 Column 2's.*

## Quilt Top Assembly

### STEP 1

Sew the columns together by staggering the columns as shown. Press seams in one direction.

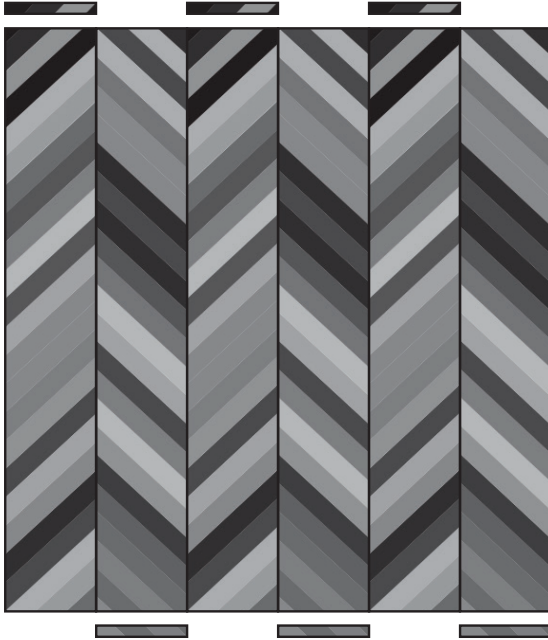


*Continued on next page*

# PATTERN INSTRUCTIONS

## STEP 2

Trim the top and bottom even. The lengths may vary so if it's not exactly this length, don't worry.



*Twin quilt, approximately 64" x 83"*

**NOTE:** Before quilting, stitch an 1/8" around the entire perimeter of the quilt to keep the bias edges from waving.

## Finishing

Quilt, bind and enjoy!



*Crib/Lap quilt should be approximately 48" x 58"*