



Thread Painted Pillow

by Katrina Walker

Feather your nest and explore the features of your Singer Quantum Stylist 9960 sewing machine as you create a uniquely decorated accent pillow. Explore the range of decorative stitches and built-in alphabets, then add colorful scribbles and texture using specialty feet and freemotion techniques. A fancy ruffle and optional button accents (made easy with the Singer automatic buttonhole foot) add extra flair.

Materials needed:

Singer Quantum Stylish 9960 sewing machine
 Singer SO100 serger (optional)

Sewing Feet

- Standard sewing foot
- Singer Buttonhole Foot
- Singer Sewing Machine Presser Foot Kit
 - Darning/Freehand Embroidery Foot
 - Cording Foot
 - Gathering Foot
 - Special Purpose Foot
 - Walking Foot (optional)

Fabric

1/2 yard medium weight fabric (such as quilting cotton) for pillow top and back
 1/2 yard medium weight fabric (such as quilting cotton) for pillow ruffle

Stabilizer

9 pieces of 6"x6" cut away or tear away stabilizer for backing pillow top

Thread

Embroidery thread in coordinating colors for pillow top decorations
 Laceweight yarn, fine cording, or heavy thread for couching
 Sewing thread for pillow construction
 3 spools of serger thread for pillow construction (optional)

Notions

Quilter's ruler, for cutting squares and strips to size
 Removable chalk or marker
 1/2" stay tape (2 yards) to use for gathering
 12" Pillow Form
 Pins
 Glue stick or basting spray (optional)
 3 1" Buttons (optional)
 2 pieces of lightweight fusible interfacing, 2"x12", if using buttons.



Preparation

Cutting:

Main pillow fabric

9 6"x6" squares for pillow front

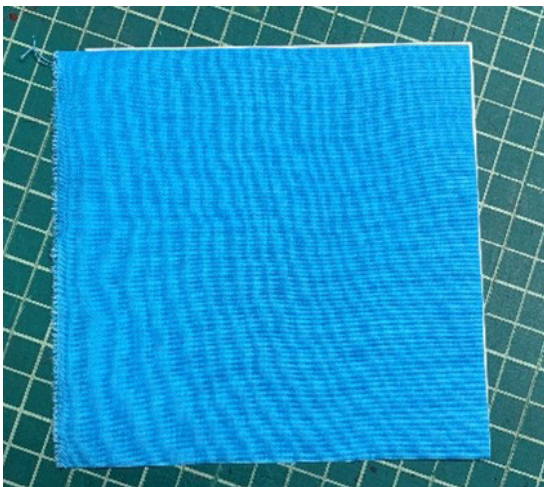
2 pieces 8"x12" for the pillow back.

Ruffle Fabric – two 8" x width of fabric strips.

Interface and Finish Seams (optional)

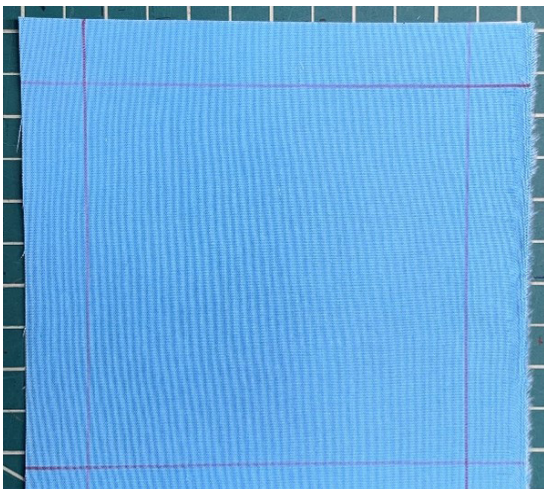
If using buttons and buttonholes, fuse the 2" interfacing strips to the wrong side of one 8" edge of each pillow bottom piece.

Serge around the edges of the 2 pillow bottom pieces using a wide 3 thread or 4 thread overlock stitch to pre-finish the raw edges. Be careful to only skim the edge of the fabric and not cut off the seam allowance.



Decorate the Pillow Top Squares

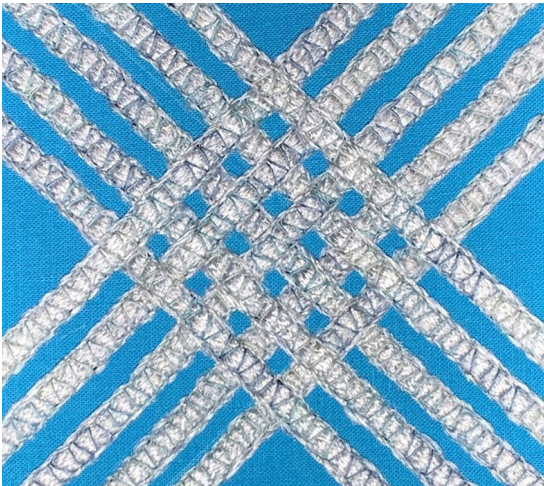
1. Place a square of stabilizer underneath each fabric square. **Pro Tip:** a small amount of glue stick or basting spray can help hold the stabilizer in place during stitching.
2. Mark a 3/4" border around each square. The area inside the border is the stitching area.
3. Divide up the squares according to the technique you wish to use to decorate them – decorative stitches, stitch patterns, couching, and freemotion embroidery are all fun options.





Decorate Squares with Decorative Stitches

1. Thread the Singer Quantum Stylist 9960 with decorative thread.
2. Use decorative stitches to embellish the square(s). Use a ruler and/or guide foot to align stitches to create straight lines if wanted. Pro Tip: Use a variety of stitches and thread colors for a fun look.



Decorate Squares with Couching Stitches

1. Change the presser foot on the sewing machine to the cording foot.
2. Load the cording foot with thin yarn, cording, or heavy thread.
3. Select a zig-zag or couching decorative stitch.
4. Stitch the yarn, cording, or thread in place as you guide the square. You can stitch freeform designs or use chalk to mark lines before stitching.



Decorate Squares with Freeemotion Embroidery

Pro Tip: Practice freeemotion embroidery on stabilized scraps of fabric before stitching on your pillow.

1. Change the presser foot to the Darning/Freeemotion Embroidery foot.
2. Lower the feed dogs for freeemotion embroidery.
3. Thread the Singer Quantum Stylist 9960 with decorative thread.
4. Select the centered straight stitch.
5. Create freeemotion embroidery by stitching on the square(s) and moving the fabric as you stitch. Try to match the sewing speed to the speed you move the fabric. Use a variety of threads for a colorful "confetti" effect.

Trim the Decorated Squares.
Trim each square to 4.5"x4.5".



Piece the Pillow Top

1. Align 9 decorated squares in a pleasing pattern of 3 rows of 3 squares.
2. Stitch each set of 3 squares together to form a row.
3. Stitch the 3 rows together to form a design of 9 squares.



Create the Ruffle

1. Seam the two ruffle fabric strips together across one short end to create a very long (84"-88") x 8" wide piece. Use the serger or a 1/4" seam to seam the strips together.
2. Press the long strip in half, wrong sides together, so it is 4" wide.
3. Attach the gathering foot to the Singer Quantum Stylist 9960 and thread with coordinating sewing thread.
4. Set the Singer Quantum Stylist 9960 for a centered straight stitch, default stitch length (2.5).
5. Place the raw edges of the folded strip under the gathering foot (on top of the feed dogs) so that they are even with the edge of the gathering foot.
6. Insert the stay tape into the groove of the gathering foot.
7. Sew the folded ruffle strip to the stay tape. The ruffle strip will gather onto the stay tape as you sew. Control the amount of gathering by adjusting how much you feed the stay tape into the foot. Be sure to make sure the ruffle fabric is still moving as it gathers or it may jam. Loosen the presser foot pressure if necessary.
8. Gather the entire length of the folded strip.
9. After gathering, either serge the raw edge of the gathered strip or zig-zag next to the straight stitching with the sewing machine and trim away the excess.
10. Trim off any excess stay tape if necessary.

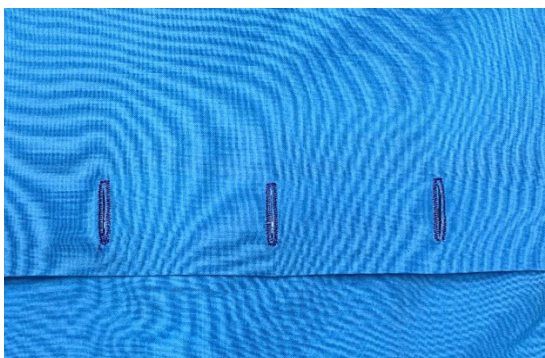


Pro Tip: For an extra decorative look, use the Overcast foot and an overcasting stitch or the serger's rolled hem to create a decorative edging on the ruffle fold.



Create the Pillow Back

1. If adding button closure, fuse the 2" interfacing pieces to the wrong side of one edge of both backing pieces.
2. Press one pillow back piece's edge 2" toward the wrong side as a hem. This is the piece that will have buttonholes added or used as the overlapping pillow back piece.
3. Leave the other pillow back piece as is (flat) and set aside.
4. Fold the piece with the hemmed edge in half along the fold to find the center of the folded edge. Mark the center with a pin.
5. Fold one edge of the folded hem edge to the marked center to find the quarter between the halfway mark and mark the quarter with a pin. Repeat for the other side.
6. The pins are where the buttonholes will be added. Place a second pin perpendicular to the marking pins (parallel to folded edge) 1/2" from the folded edge to mark the edge of the buttonhole.
7. Put the buttonhole foot on the Singer Quantum Stylist 9960.
8. Thread the Singer Quantum Stylist 9960 with coordinating buttonhole thread.
9. Place the button in the back of the buttonhole foot to set the buttonhole length (or adjust manually).
10. Stitch a test buttonhole on a scrap first to check the buttonhole size.
11. If the buttonhole test is satisfactory, use the pin markings to align the pillow back piece in the Singer Quantum Stylist 9960.
12. Stitch the three buttonholes in place.
13. Carefully cut open the buttonholes.
14. Place the second pillow back piece under the buttonhole back piece, aligned so that it creates a 12" square, overlapping by 2" in the center.
15. Use the buttonholes to mark the button placement with an erasable fabric marker.
16. Stitch the buttons in place according to the marks, using a button foot or by hand.





Assemble the Pillow

1. Use a plate or similar circular object to round off the corners of the pillow front.
2. Align the pillow back pieces with the pillow front and cut the corners of the back pieces to match those of the front pillow piece.
3. Align the raw edge of the ruffle around the edge of the pillow front, with the opening raw edge folded down diagonally so that it is aligned with the raw edge. Do the same with the other end of the ruffle, making sure the ends overlap by at least a few inches, and trimming to fit if necessary.
4. Baste the ruffle in place using a 1/4" seam. Check to make sure ruffle placement looks attractive.
5. Lay the pillow back pieces on the front pillow pieces, right sides together, with the folded back piece laying closest to the pillow front. Make sure the ruffle is oriented toward the pillow center so it is not caught in the stitching.
6. Baste all layers together. Use a walking foot if necessary to stitch through all the layers easily.
7. Check the stitching to ensure all layers are tacked together, then stitch the pillow seam using a 1/2" seam allowance, either on the Singer Quantum Stylist 9960 or the Singer SO100 serger.
8. Finish the seam allowances by either using a serger or pinking shears. If using pinking shears, trim closely to the stitching so corners will turn out smoothly.
9. Turn the finished pillow right side out through the back opening.

Enjoy your fancy new thread decorated pillow!



