

THE
**MIDNIGHT
QUILT
SHOW**



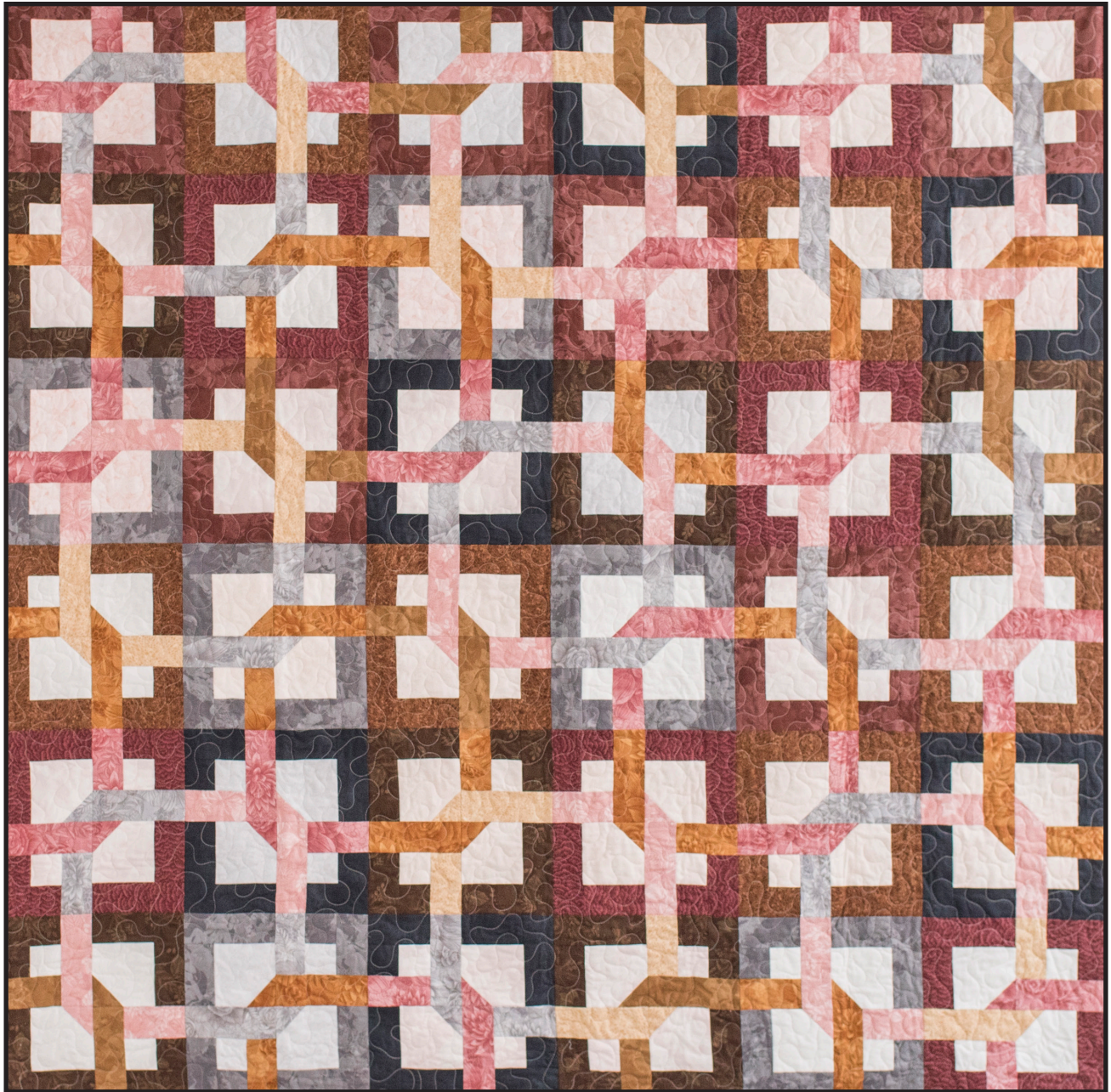
THE PUZZLE EPISODE

Brought to you by *Craftsy*

PUZZLE QUILT

Designed by Monique Dillard, featuring Boundless Fabrics

Kit Available Exclusively at [Craftsy.com](https://www.craftsy.com)



THE MIDNIGHT QUILT SHOW

Brought to you by *Craftsy*

FEATURED IN THIS EPISODE



Puzzle Quilt Kit, Designed by Monique Dillard. Kit includes everything you need for your quilt top and binding, plus the pattern.



You can also purchase the pattern separately by searching "Puzzle Quilt Kit" on [Craftsy.com](https://www.craftsy.com) and selecting it from the drop down menu.

SUBSCRIBE

Be sure to never miss an episode! Go to youtube.com/midnightquiltshow and click "Subscribe" to get fresh episodes delivered to your inbox.

#MIDNIGHTQUILTSHOW #FEELINGCRAFTSY

Join our Instagram community! Follow @CraftsyQuilts and @BeCraftsy for daily inspiration, then share your own projects to inspire your fellow makers. Use the hashtag #MidnightQuiltShow and #FeelingCraftsy so we can see what you've made (and re-share it, too)!



QUESTIONS OR COMMENTS?



Get in touch with our Customer Support team at [CraftsyHelp.com](https://www.craftsy.com/help)
HAPPY MAKING!

TIPS FOR SUCCESS

- 1. WATCH THE EPISODE!**
See how Angela pieces and quilts these designs as she works her way through the quilt top. Go to youtube.com/midnightquiltshow and search for Puzzle.
- 2. GET THE DIAGRAMS**
See the next few pages for Angela's sketched quilting designs. These are a great starting point for quilting ideas-- whether you want to Turn In Early with something simpler, or stay Up All Night with more free-motion fun.
- 3. GET YOUR MACHINE READY**
Prepare for quilting success by ensuring that your machine needle is sharp. Are you experiencing breakage of your top thread, or skipped stitches? Do you hear a quiet popping sound when your needles move through the fabric? These are all signs that your needle is dull and it's time for a change.

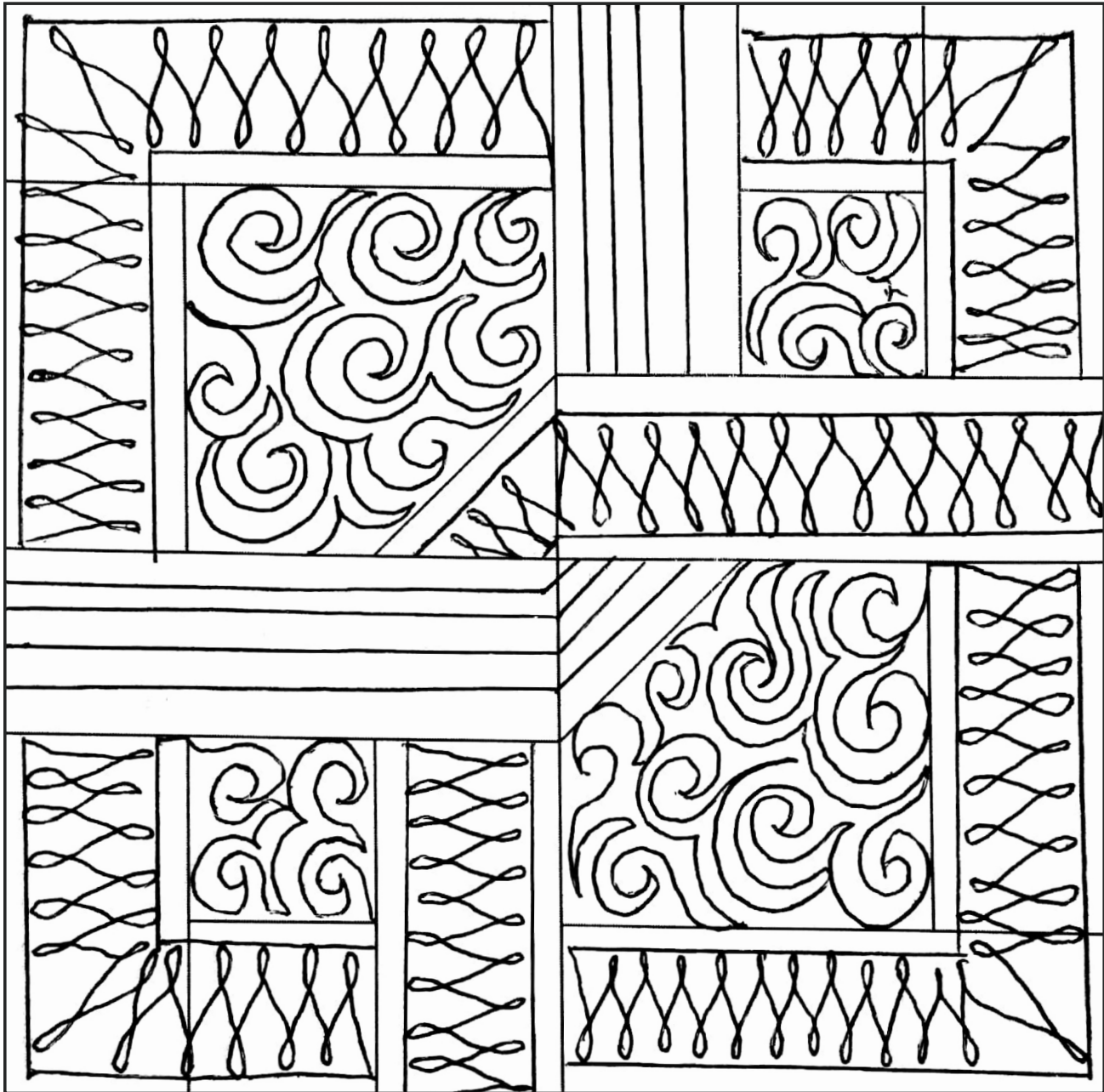


Craftsy

CRAFTSY.COM

UP ALL NIGHT

Quilting Diagram



Enhance the illusion of the pattern by using quilting designs that follow the piecing. By adding a couple of echo lines and a simple wishbone design, you can create a "custom-quilted" look without marking. The trickiest part of this quilting technique is getting from one area to another. If you find yourself stuck, just travel along the piecing to get to the next area.

Brought to you by **Craftsy**