

## Suggested Tools and Supplies

These tools and supplies were used in this class.



- **Acrylic Paint:** 4 oz. tubes of each, in the following colors (cheap ones)
  - Primary Red
  - Primary yellow
  - Primary blue
    - \* (or choose names such as bright or pure if you cannot find ones labeled primary)
  - Black
  - White
  - Payne's Gray
- **Printer**
- **White Card Stock:** 15-20 sheets for printing
- **Paint Brushes:** Several small angled brushes (about  $\frac{1}{2}$  -  $\frac{3}{4}$  inch)
- **Water Container**
- **Mixing Containers** or **Wax Paper**
- **Or, if you have a very large stash, use fabric instead of paint.**

# Understanding the Twelve Colors

Instructor: Heather Thomas

To help you gain a better understanding of the twelve colors and what makes them different it is best to create your own color scale. Heather recommends doing a full page of each color using your choice of either fabric or paint. The following pages include samples of Heathers painted color scales and shows how adding white, gray and black change the overall color. Also included is a blank scale template for your use.

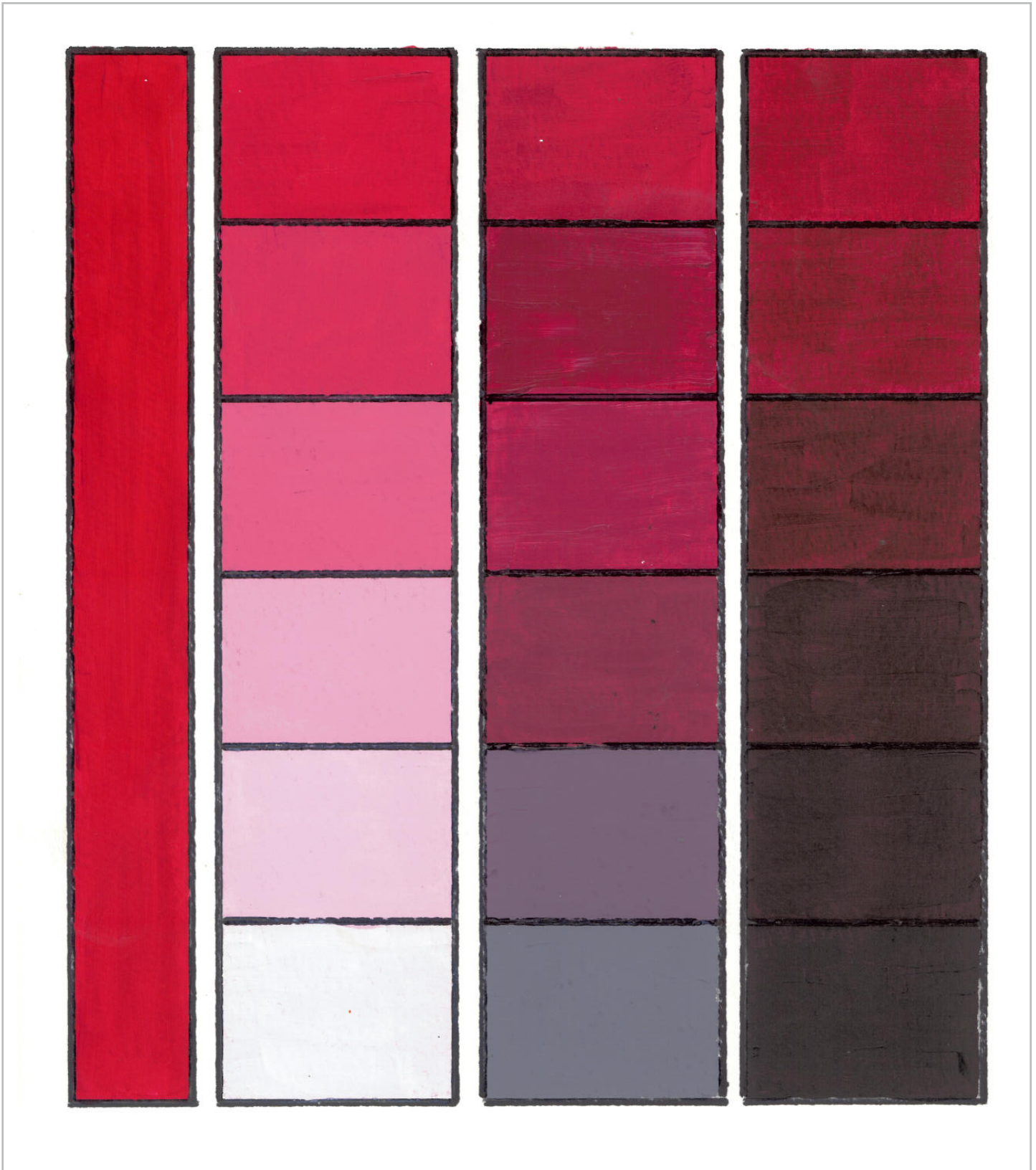


## Grayscale

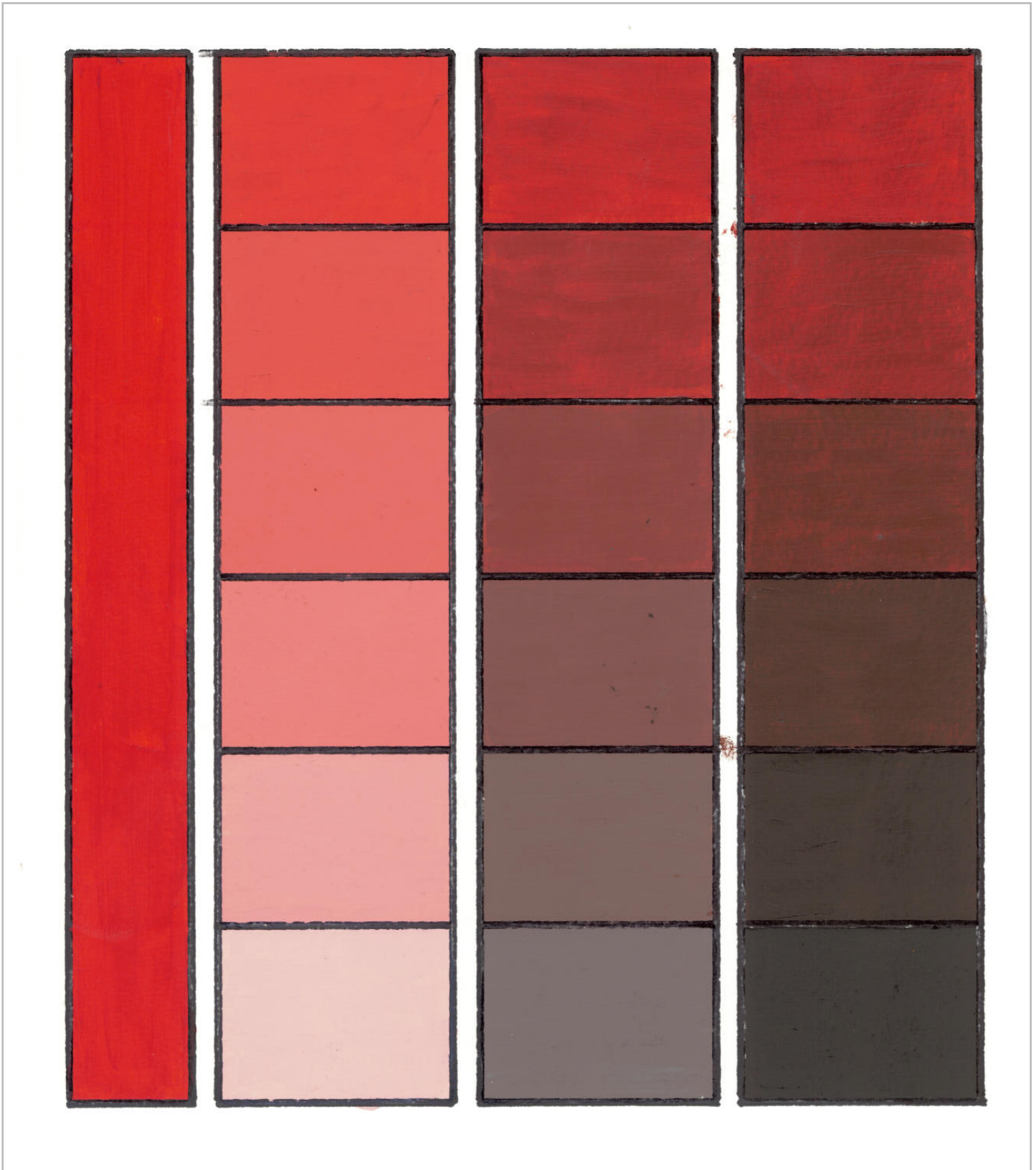
---



# Red

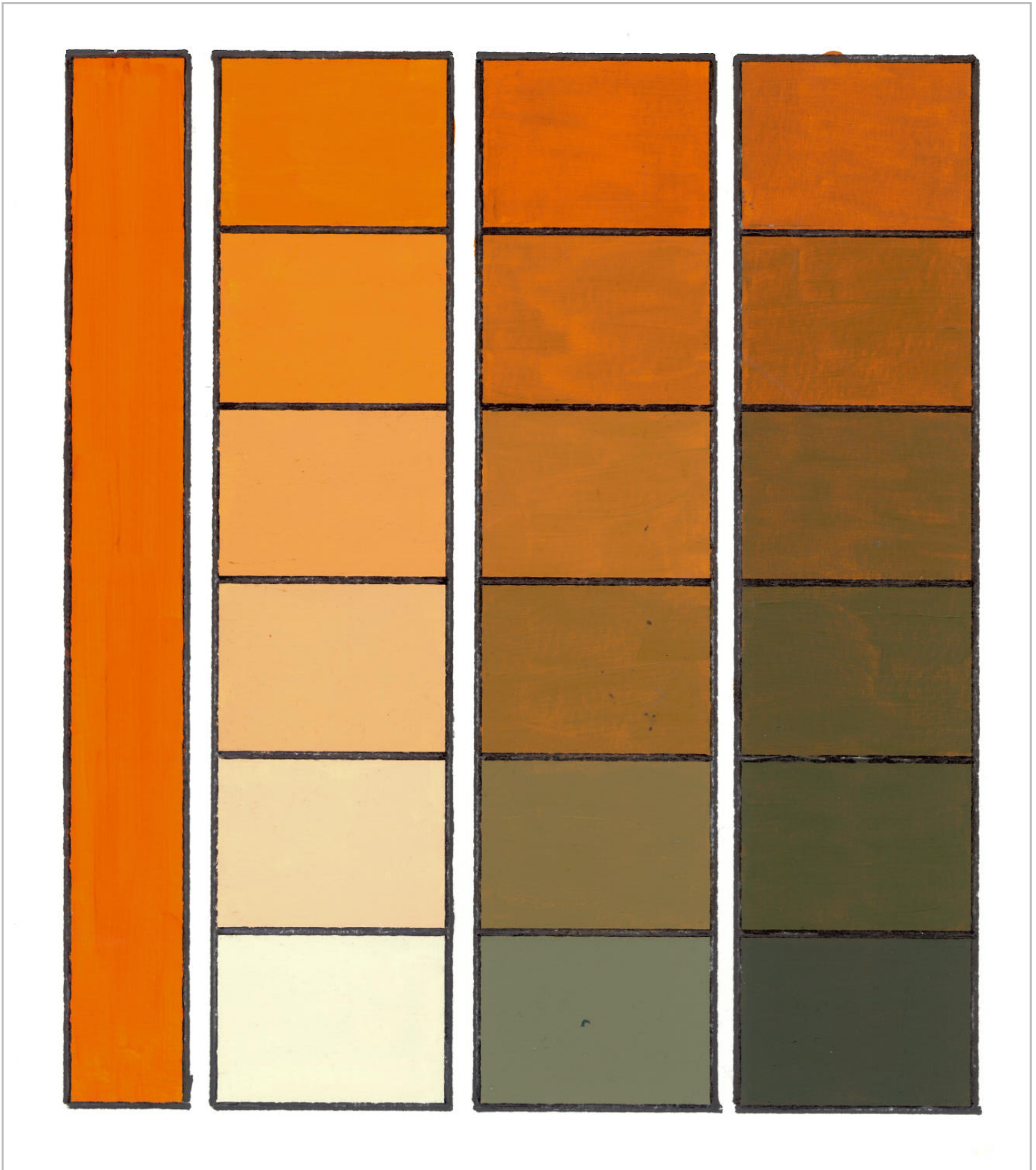


# Red Orange

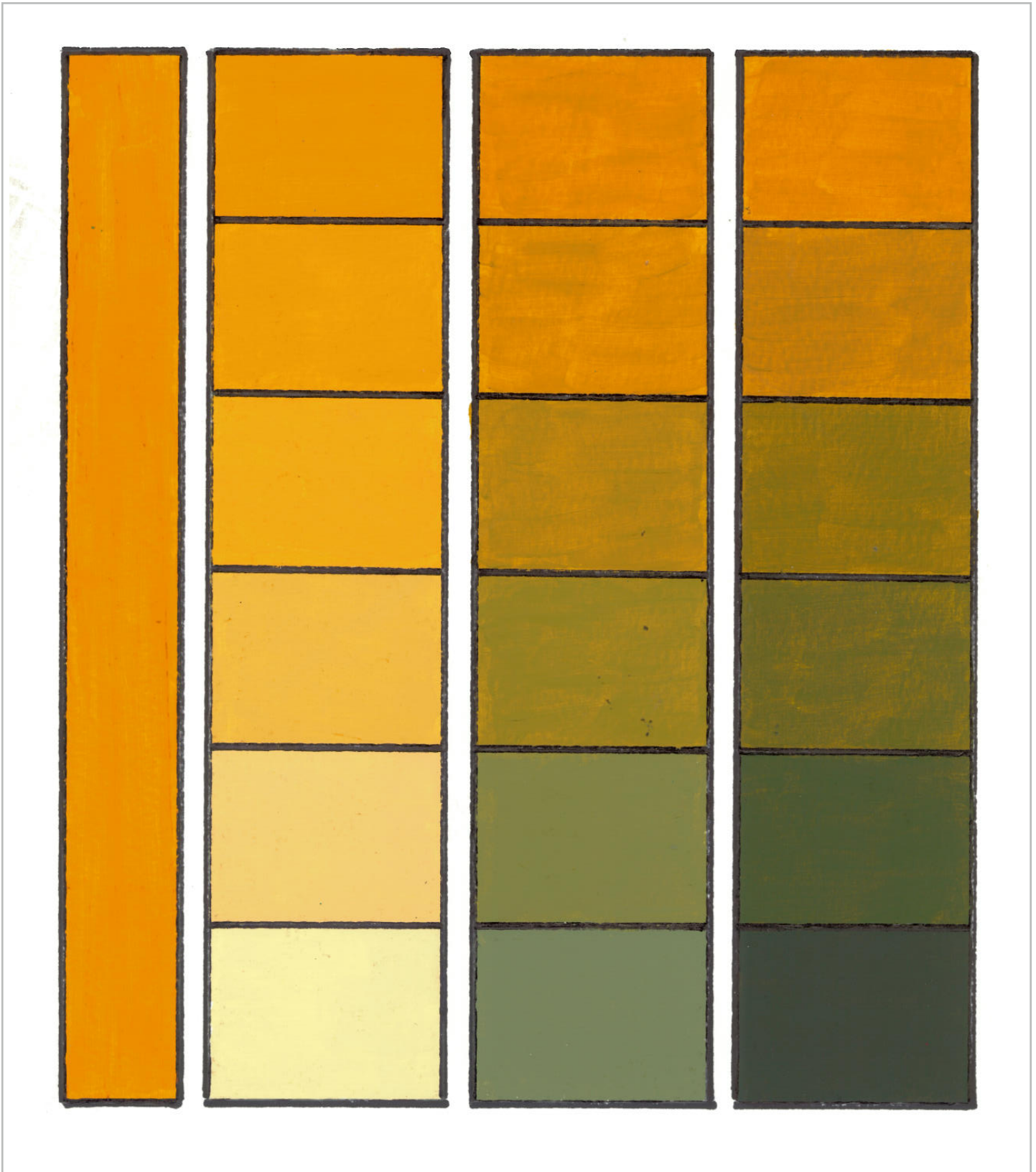


## Orange

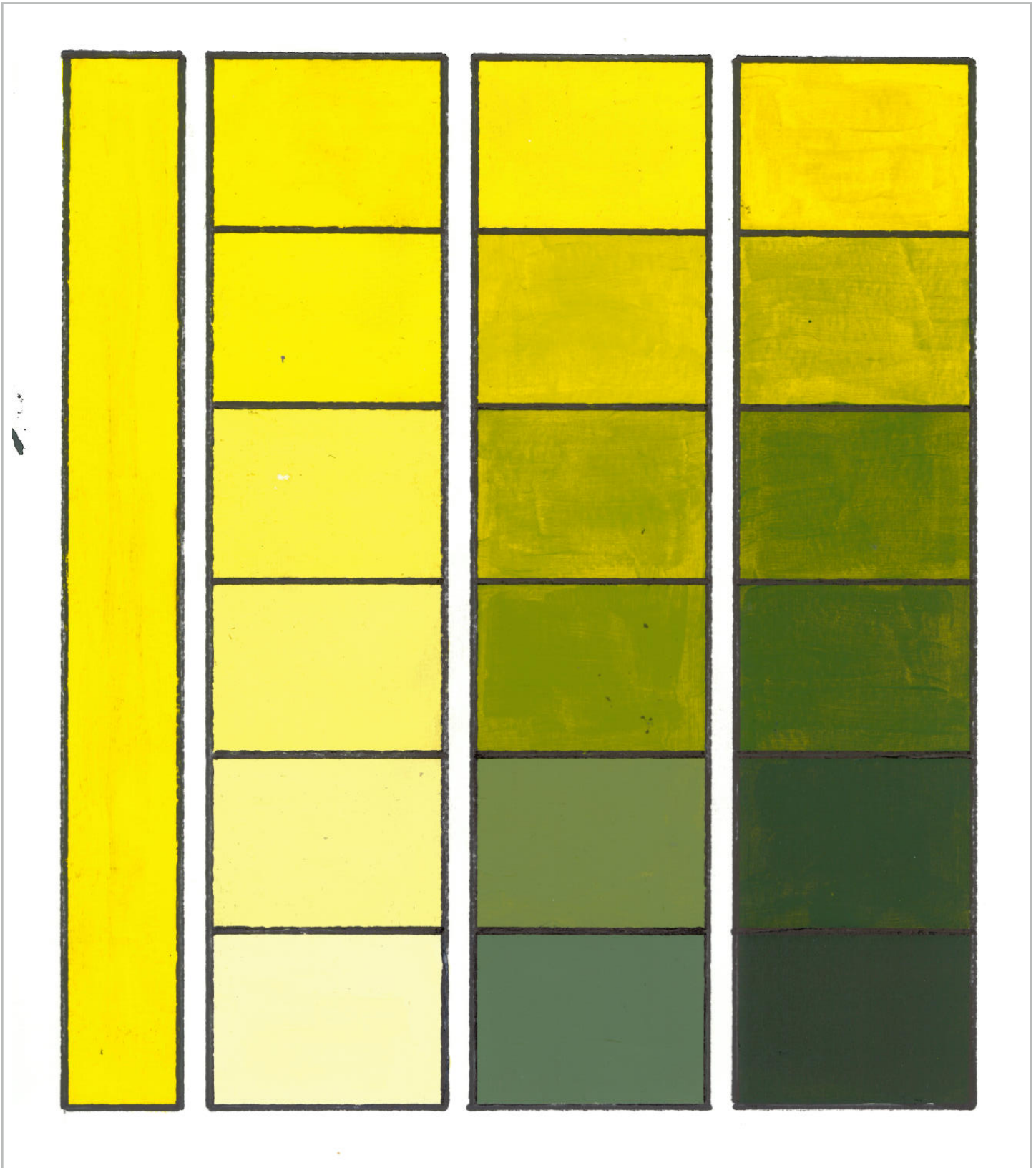
---



# Yellow Orange

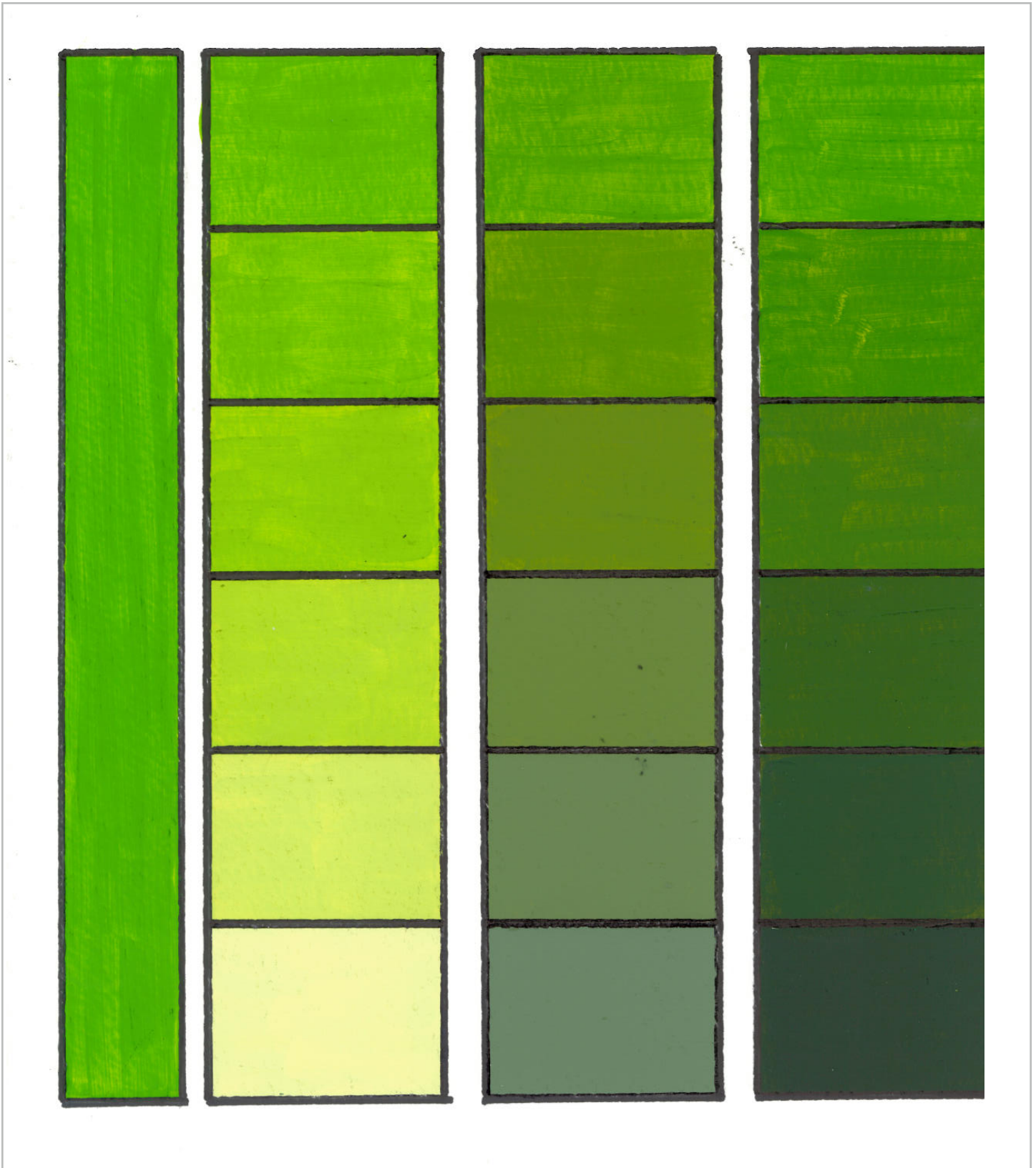


# Yellow

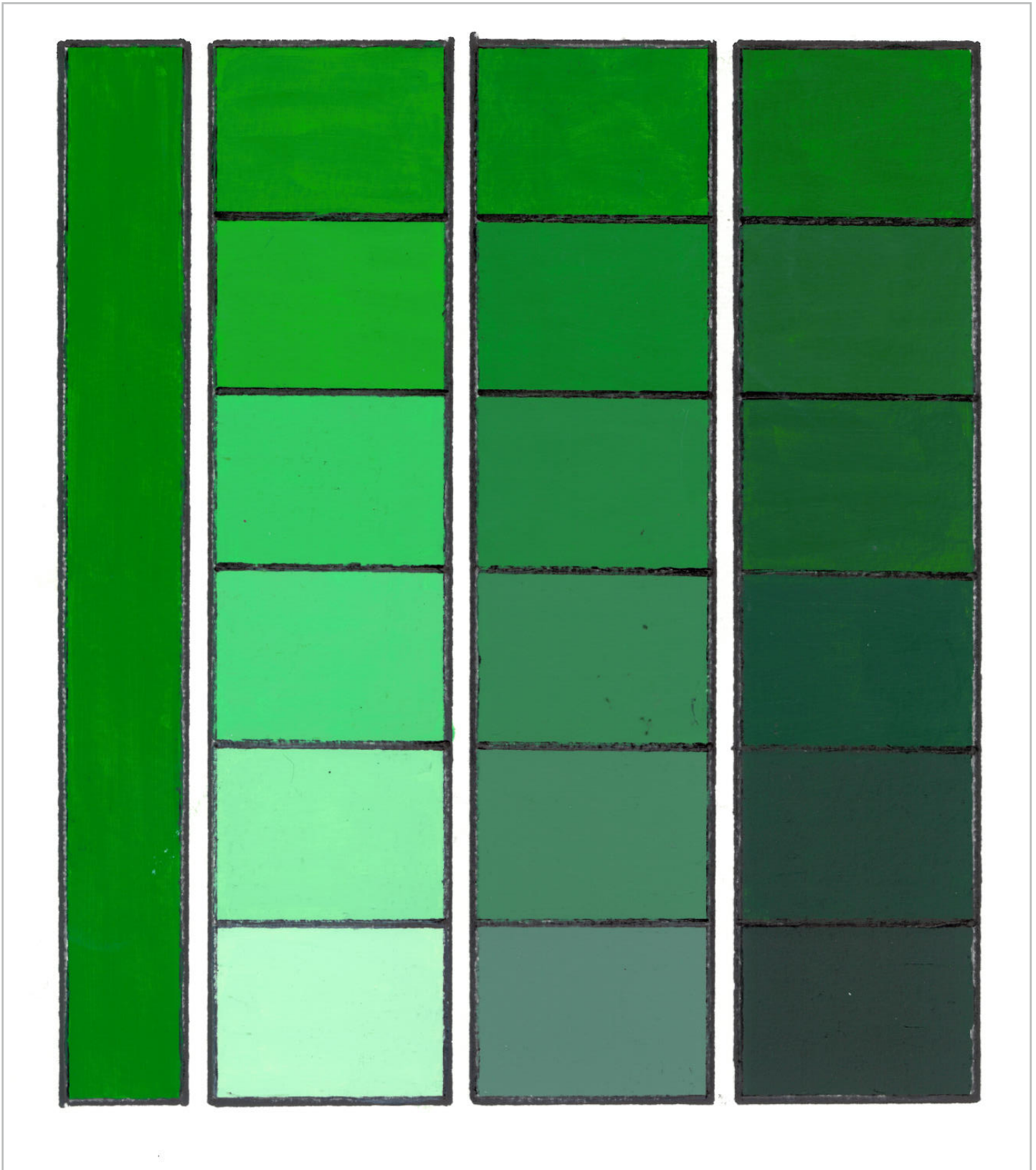




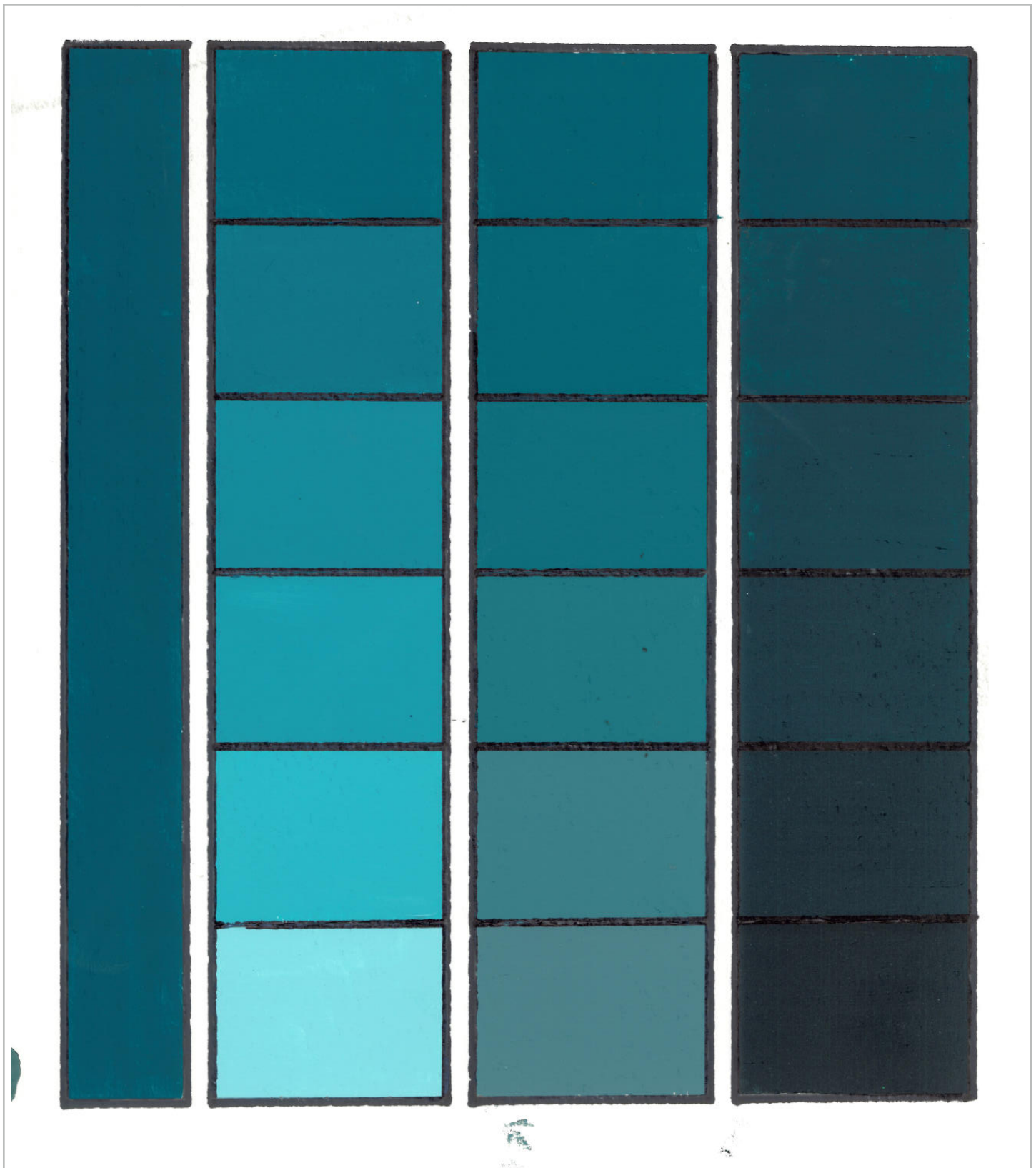
# Yellow Green



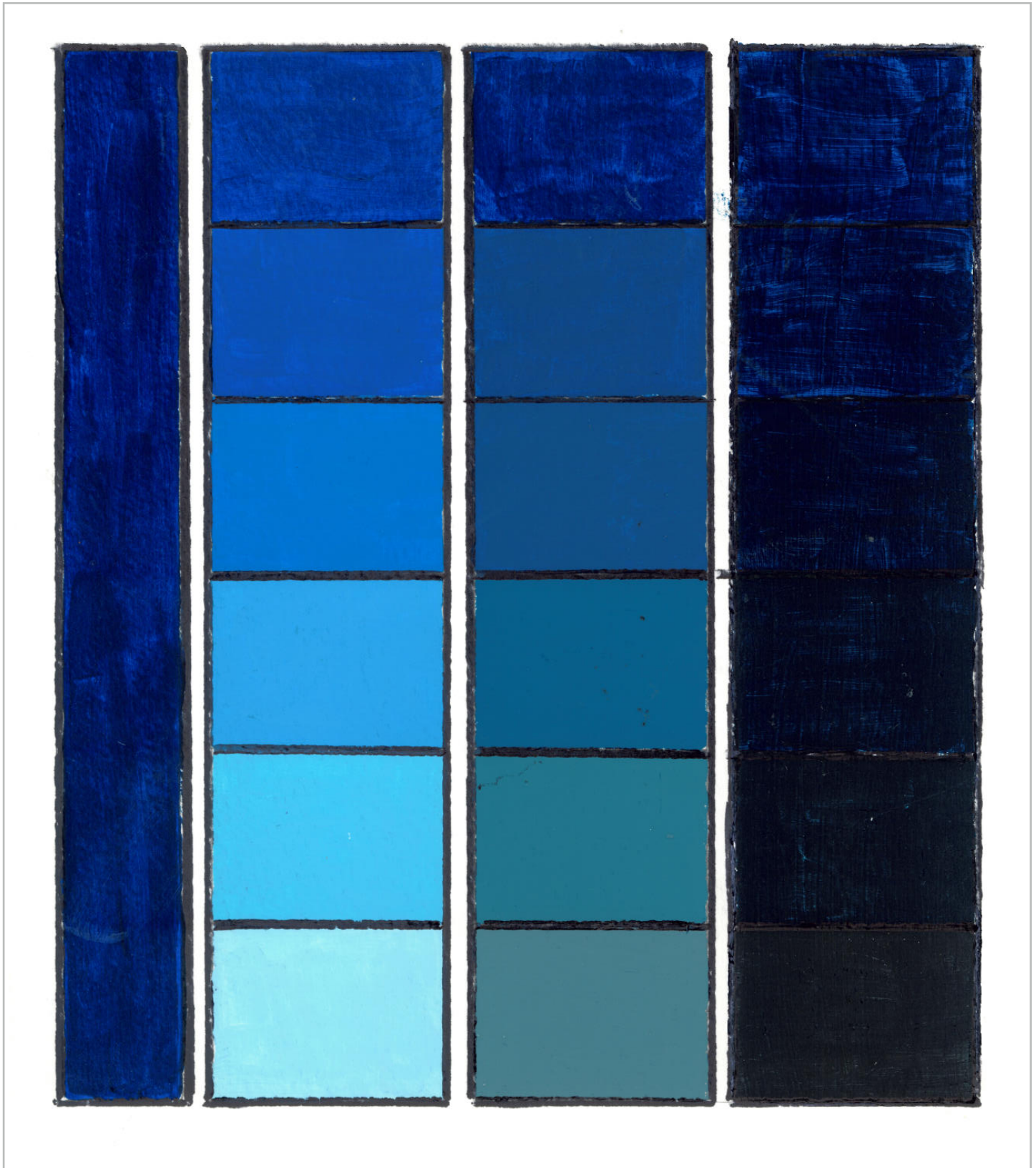
# Green



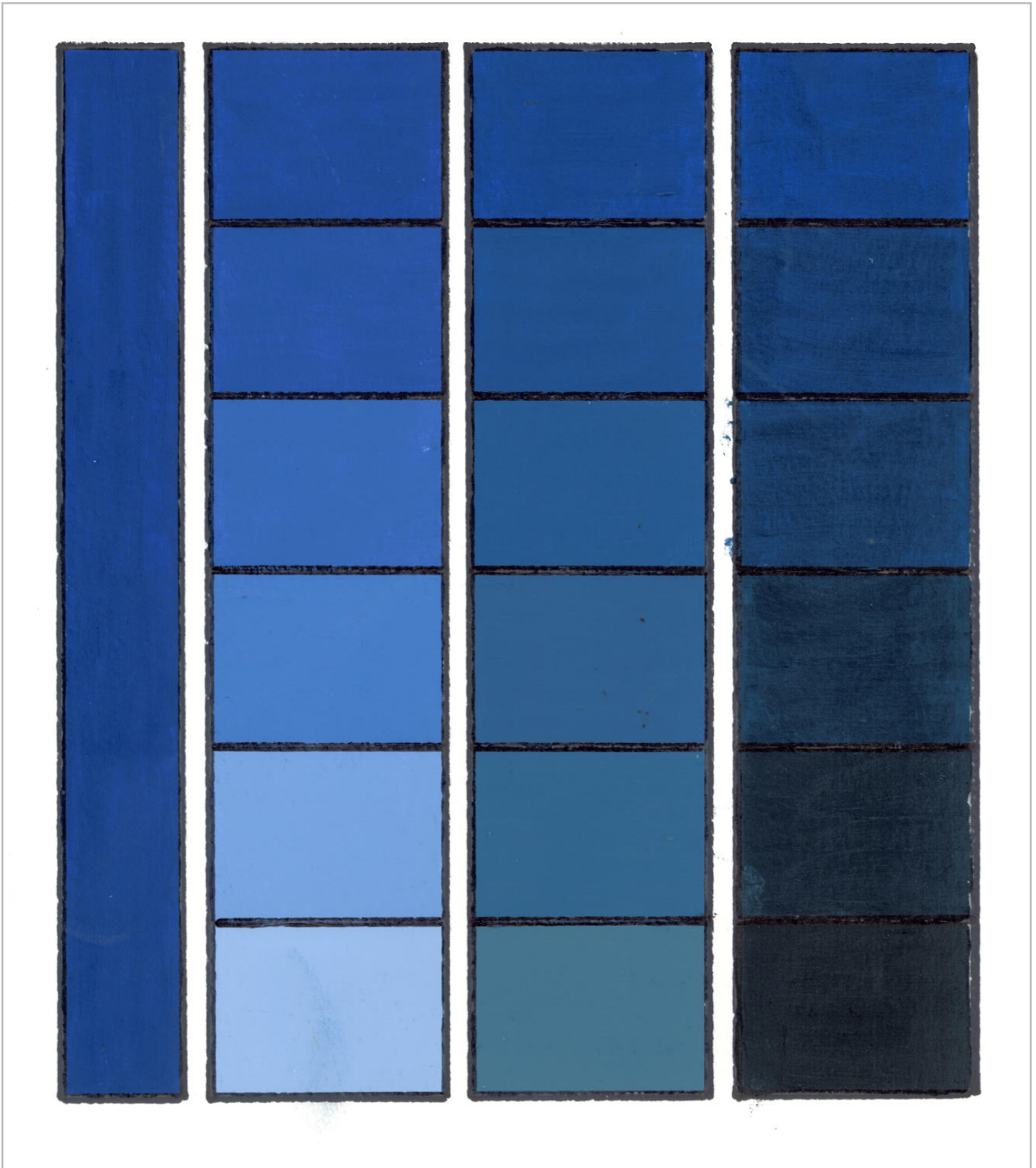
# Blue Green



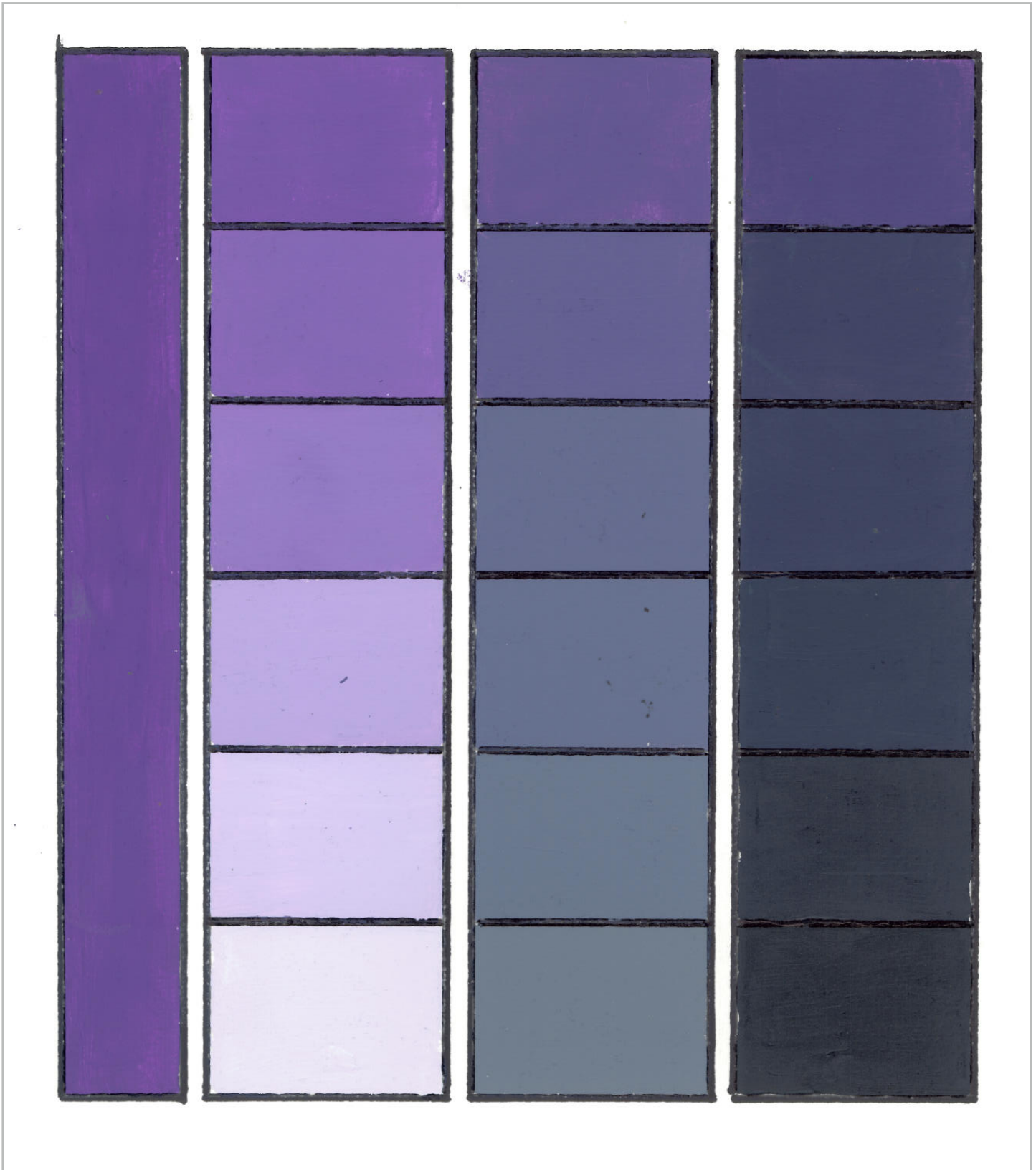
# Blue



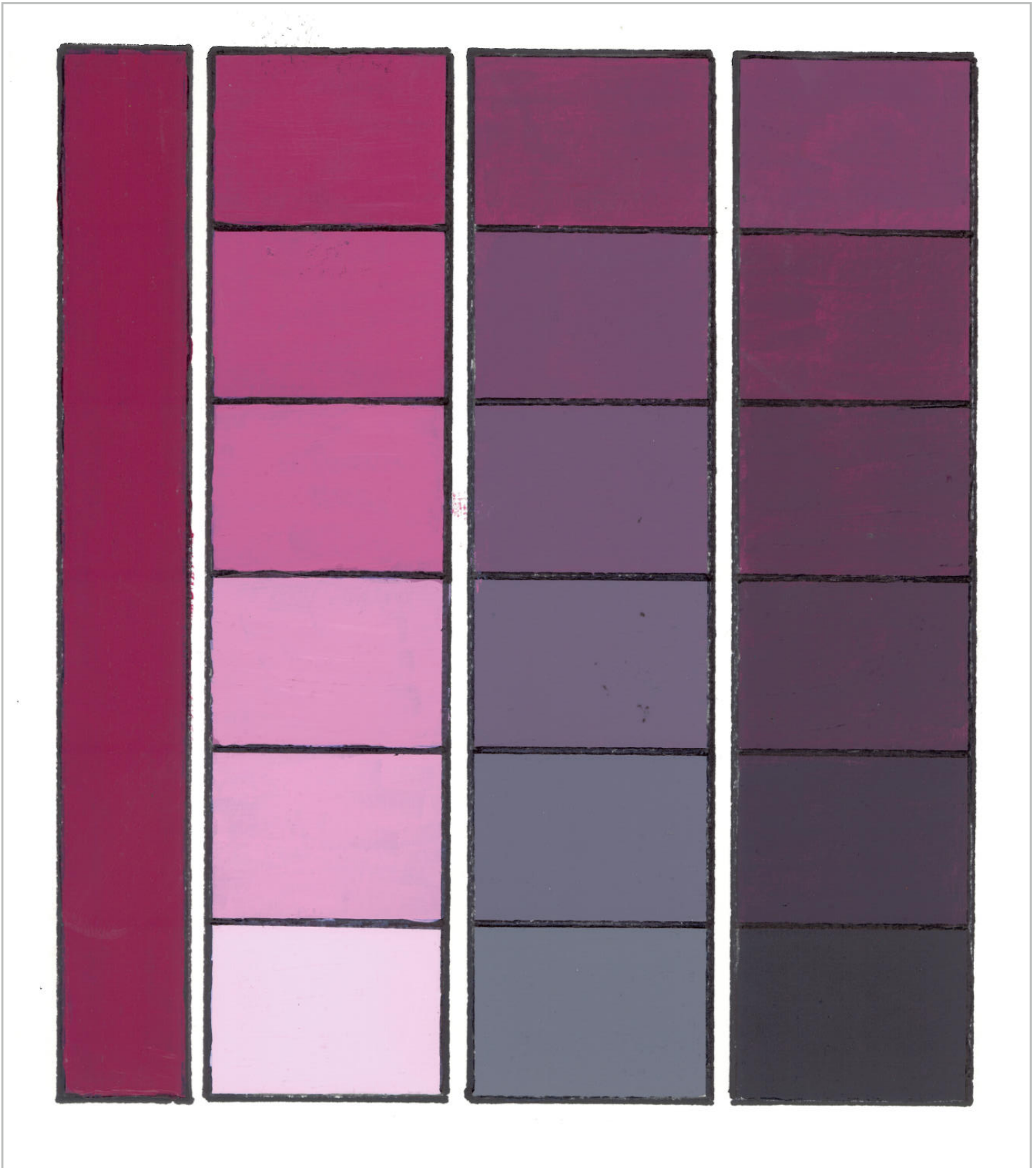
# Blue Violet



# Violet



# Red Violet



## Color:

---

PURE HUE

TINTS

+ WHITE

TONES

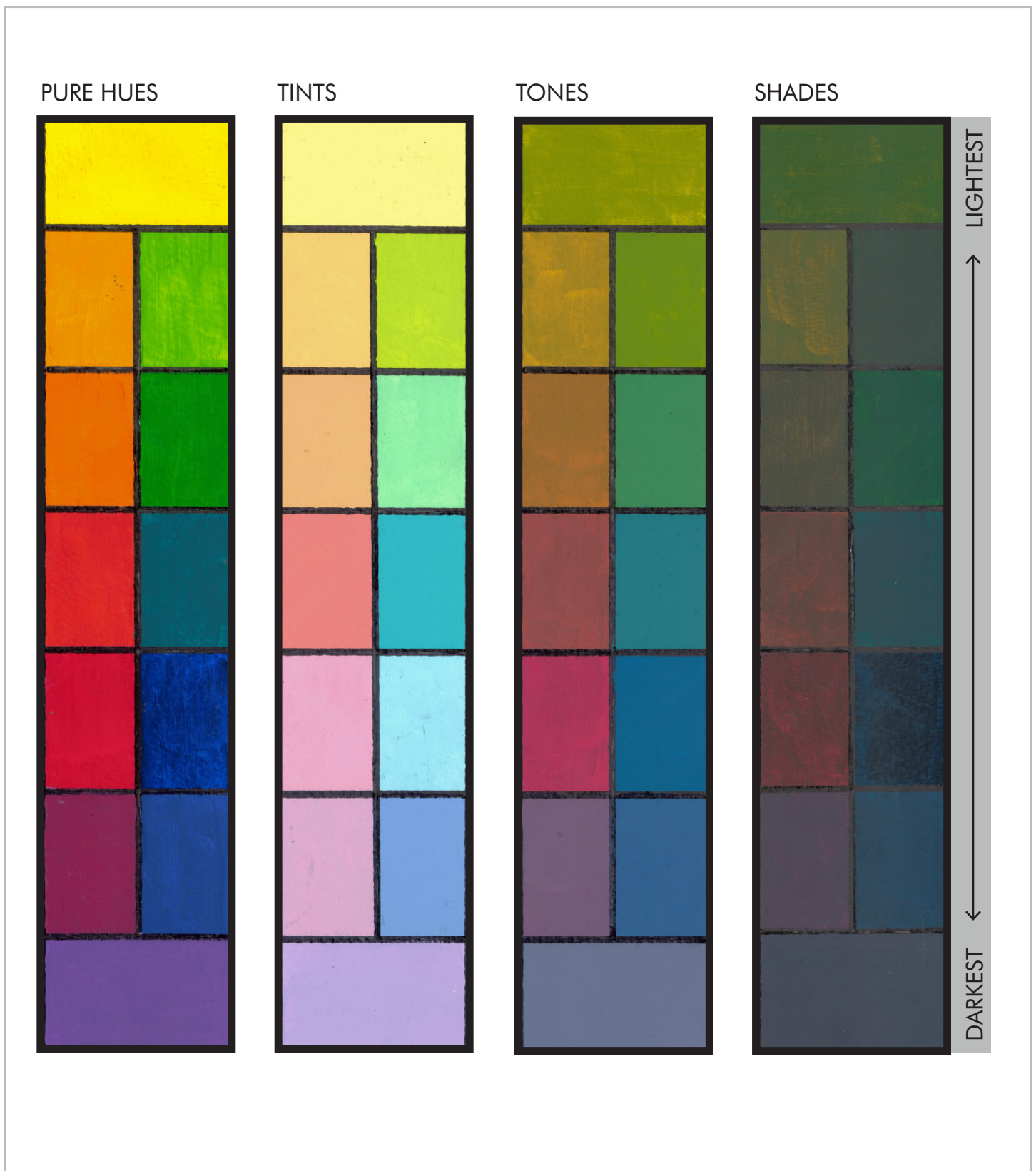
+ GRAY

SHADES

+ BLACK

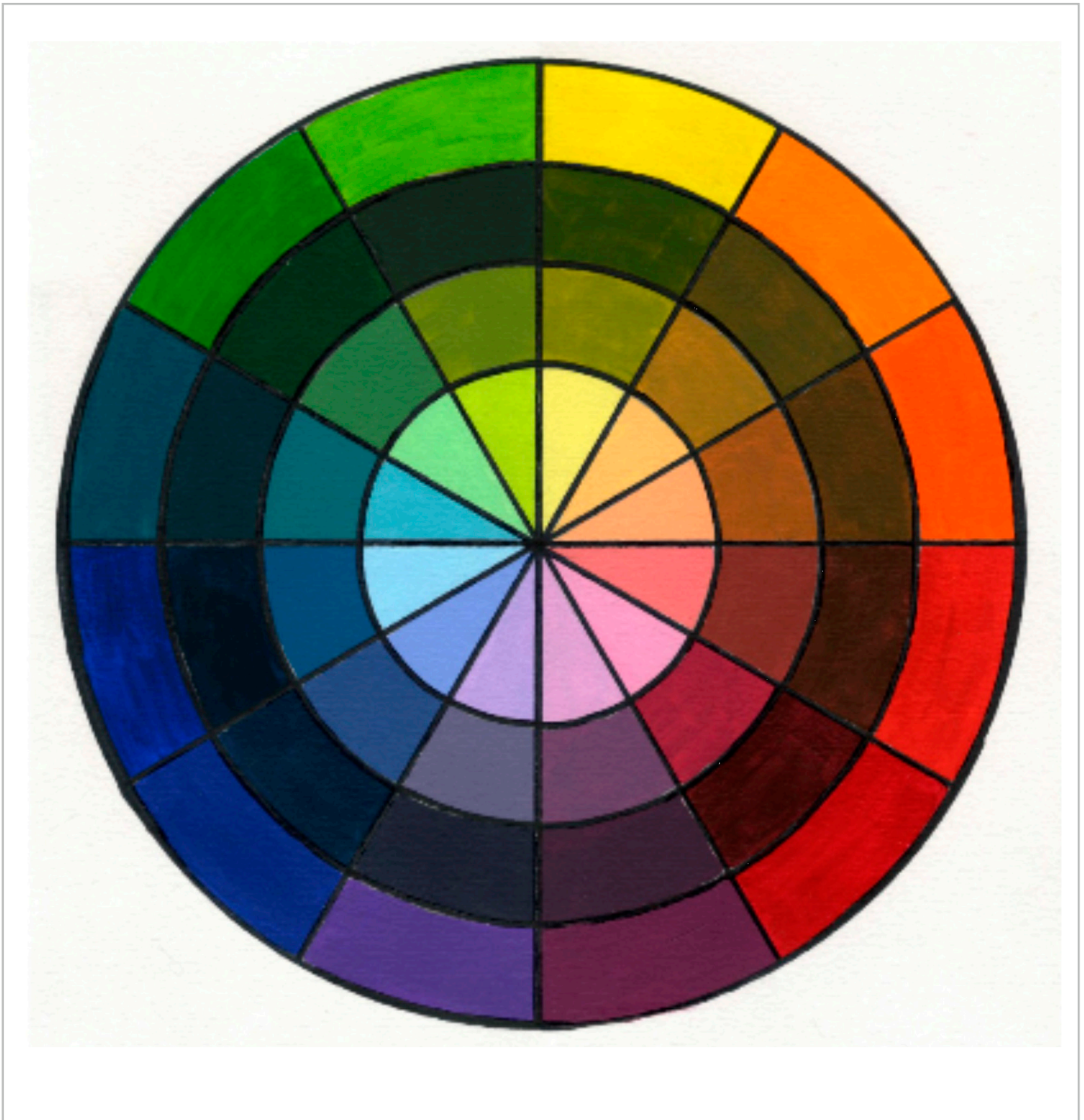


## Pure Hues, Tints, Tones, & Shades



**Painted, Painters Primary Color Wheel** (based on red, yellow & blue)

Outer ring; pure hues, next ring, shades (black added), next ring, tones (gray or direct complement added), innermost ring, tints (white added)



**Fabric, Painters Primary Color Wheel** (based on red, yellow & blue)

Outer ring; pure hues, next ring, shades (black added), next ring, tones (gray or direct complement added), innermost ring, tints (white added)



