



# Fancy Flatlocked Table Décor

by Katrina Walker

Dress up your table with cheerful color by serging a fun and easy table runner and placemat set. Add some ribbon accents for a little extra pizzazz – flatlock stitches and the Singer SO100 serger make everything simple. This quick project is so fabulous you'll want to make a set for every occasion!



### Supplies for 1 table runner and 4 matching placemats:

- Singer SO100 Serger
- Singer Quantum Stylist 9960 sewing machine
- Singer blind hem foot
- 21 strips of coordinating fabrics, cut 2 1/2" wide by width of fabric (WOF) or 1 jelly roll/strip pack (total yardage 1 1/2 yards)
- 1 1/2 yards backing fabric
- 3 spools of coordinating serger thread
- Coordinating sewing machine thread and bobbin
- 22 yards of 1/8" ribbon (optional)
- Tapestry needle or flat bodkin (also called ribbon needle) for threading ribbon (optional)



#### Set up Serger

Thread the Singer SO100 Serger for a wide three thread flatlock. The needle thread will show on the right side of the project.

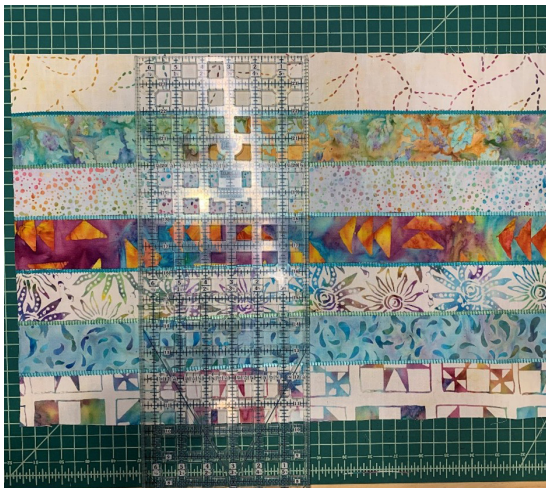
#### Construct the Table Runner and Placemat Tops

1. Separate the cut strips into sets of 7.
2. Serge one strip to another strip lengthwise, right sides together, using a wide flatlock stitch.
3. Gently pull the seam apart so that it lays flat. Press the seam.
4. Serge a third strip to the first two along one lengthwise edge using a flatlock stitch.
5. Gently pull the seam apart so that it lays flat. Press the seam.
6. Continue to add strips and press until a set of seven strips have been flatlocked together.
7. If using ribbon, thread a ribbon into a flat bodkin or tapestry needle.
8. Pull the ribbon through the ladder stitches on the right side of the fabric, keeping the ribbon flat as you pull it through.





9. Pull the ribbon through all 6 seams of the section.
10. Repeat the steps with the remaining sets of 7 strips, so that there are 3 sets of 7 flatlocked strips total.
11. Measure the width (shortest measurement) of the pieced set of 7 strips. Do this for each set.
12. Use the width measurement for each set of strips to cut each pieced section into 3 squares.



**For the table runner:**

1. Select 3 of the pieced squares from the same pieced set.
2. Arrange the squares in a line, with the direction of the piecing facing alternating directions.
3. Serge the squares together using the wide flatlock stitch.
4. Gently pull the seams apart so that they lay flat. Press the seams.
5. If using ribbon, pull ribbon through the seams as was done with the pieced squares.



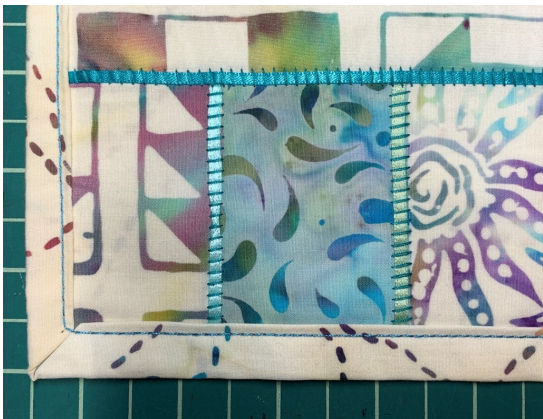
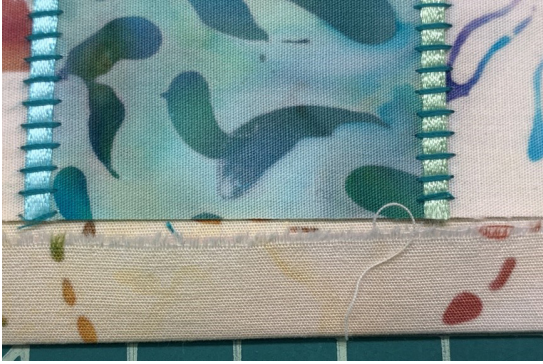
**For the placemats:**

1. From each section of pieced strips remaining, select 2 squares to be placemat centers, and 1 to be the placemat borders.
2. Cut the remaining placemat border square into fourths (4 equal pieces), with the piecing aligned perpendicular (sideways) to the cuts.
3. For each of the 2 center squares, align the square so that the pieced sections are running vertically. Align a border strip along the left and right side of the square.
4. Serge a pieced border strip to each side of each placemat center square using the wide flatlock stitch. Gently pull the seams flat and press.
5. If using ribbon, pull ribbon through the placemat seams.
6. Repeat for the remaining pieced section to create the remaining 2 placemats.

**Finishing**

The finishing steps are the same for both the table runner and placemats.

1. For the table runner and each placemat, cut a rectangle from the backing fabric 2" larger than the pieced item in each direction.
2. On the wrong side of the backing piece, mark lines at each corner with chalk or erasable pen 1" from the raw edge. Also mark lines along the long edges 1" from the raw edge. These will be your alignment marks.
3. Center the table runner on the backing fabric wrong sides together using the alignment marks and baste in place. There should be a 1" border around the edges of the pieced table runner.
4. Fold and press the raw edge of the backing fabric toward the raw edge of the pieced table runner so it almost touches the pieced table runner. Do this on all sides.



5. Press the folded edge of the backing fabric so that it extends over the raw edge of the pieced table runner like a binding. Pin or baste in place as you go. Pro Tip: Use a lightweight fusible web or glue stick to hold the fabric securely in place before sewing.

6. At the corners, press along one edge, then press the other perpendicular edge in place. Alternatively, fold the corner to create a miter at each corner, as demonstrated in the video.

7. Thread your Singer Quantum Stylist 9960 with coordinating thread.

8. Set the Singer Quantum Stylist 9960 for a straight stitch and attach the blind hem foot.

9. Align the blind hem foot guide next to the edge of the backing fold on the right side of the table runner.

10. Adjust the needle position so that the needle is aligned to edge stitch the fold of the backing fabric in place.

11. Stitch around the table runner, securing the backing fold in place.

Enjoy your beautiful new table décor!



